

/DESCRIBE

A LOOK AT MIDJOURNEY'S POWERFUL NEW COMMAND

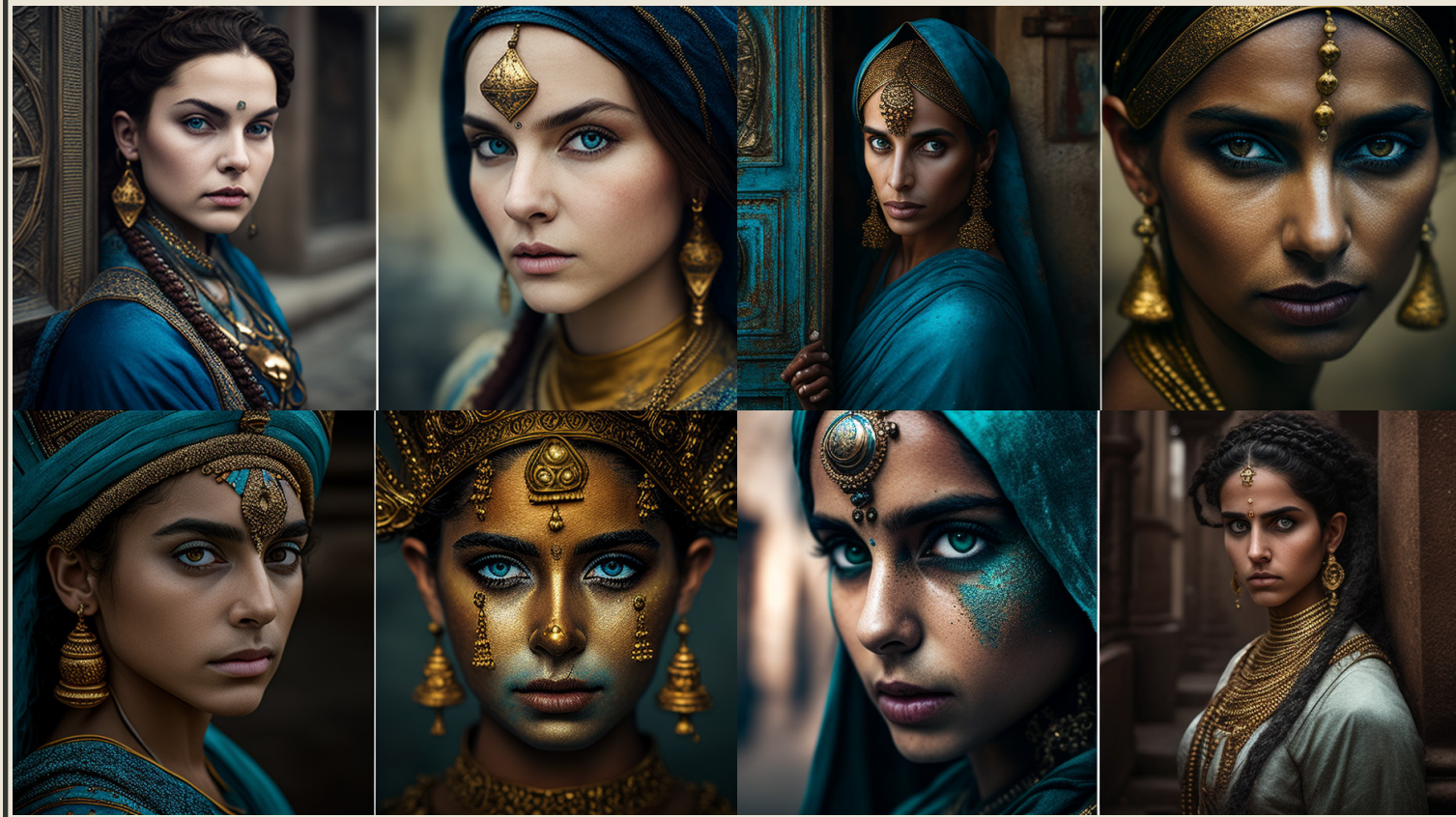
/DESCRIBE

A new command in Midjourney for Image to Text. Simply issue the command and upload an image. Midjourney will then give you 4 prompt choices that try to describe the image..



ORIGINAL PROMPT

The Divine Prophetess of Paris, close - up, realism, detailed, 35mm photography, Unreal Engine, Cinematic, Color Grading, portrait Photography, Shot on 50mm lense, Ultra - Wide Angle, Depth of Field, hyper - detailed, beautifully color - coded, insane details, intricate details, beautifully color graded, Unreal Engine, Cinematic, Color Grading, Editorial Photography, Photography, Photoshoot, Depth of Field, DOF, Tilt Blur, Shutter Speed 1/ 1000, F/ 22, White Balance, 32k, Super - Resolution, ProPhoto RGB, VR, Lonely, Good, Massive, Halfrear Lighting, Backlight, Natural Lighting, Incandescent, Optical Fiber, Moody Lighting, Cinematic Light- ing, Studio Lighting, Beautiful Lighting, Accent Lighting, Global Illumination, Screen Space Global Illumination, Ray Tracing Global Illumination, Optics, Scat- tering, Glowing, Shadows, Rough, Shimmering, Ray Tracing Reflections, Lumen Reflections, Screen Space Reflections, Diffraction Grading, GB Displacement, Scan Lines, Ray Traced, Ray Tracing Ambient Occlusion, Anti - Aliasing, Fxaa, TAA, RTX, SSAO, Shaders, OpenGL - Shaders, GLSL - Shaders, Post Processing, Post - Production, Cel Shading, Tone Mapping, CGI, VFX, SFX, insanely detailed and intricate, hypermaximalist, elegant, hyper realistic, super detailed --ar 16:9



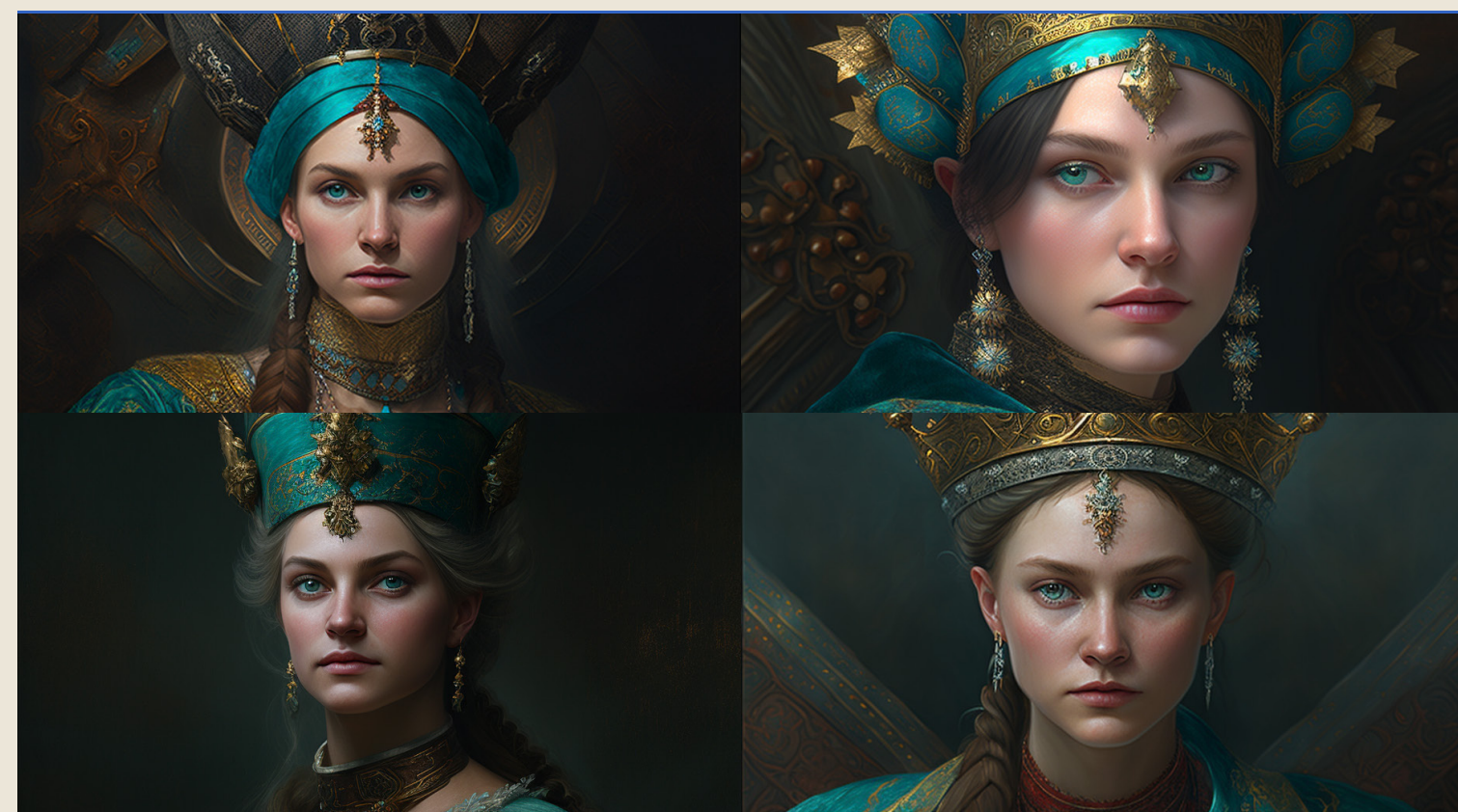
woman is wearing an ancient style in the streets of paris, in the style of byzantine-inspired, epic portraiture, dark gold and dark aquamarine, close-up shots, indian traditions, national geographic photo, pre-raphaelite --ar 91:51

HERE ARE THE RETURN IMAGES BASED ON /DESCRIBE

NOTE THAT THE ASPECT RATIO COMES BACK AT 91:51, WHILE THE ORIGINAL IMAGE WAS AT 16:9. THIS DOES NOT SEEM TO HAVE AN EFFECT ON THE FINAL IMAGES' ASPECT RATIO.



tume stands on the street, in the style of dark gold and dark aquamarine, intense close-ups, orientalist imagery, strong facial expression, soviet, photo taken with provia, queencore --ar 91:51



woman with traditional costume dressed up in a crown, looking up with camera, in the style of dark turquoise and bronze, beautiful women, city portraits, edgar maxence, high resolution, alexandr averin, intense close-ups --ar 91:51



the young girl with some jewelry in front of a city, in the style of historical genre, rebecca saray, detailed facial features, uhd image, anka zhuravleva, teal and amber, mehmed siyah-kalem --ar 91:51

IMAGES FROM PHOTO

For this example, I took a photograph that I took of a waterfall with a Canon R6, 24mm lens, 1/6s, f/22, ISO 100. It is interesting to note that Midjourney returned with a prompt that did call out an F-Stop and Lens, but it was not accurate. We can surmise that Midjourney does not look at reference image metadata.

ORIGINAL/REAL PHOTOGRAPH



a waterfall is seen coming from the rocks in the woods, in the style of samyang af 14mm f/2.8 rf, 32k uhd --ar 3:2

PROMPT LANGUAGE & TOKENS

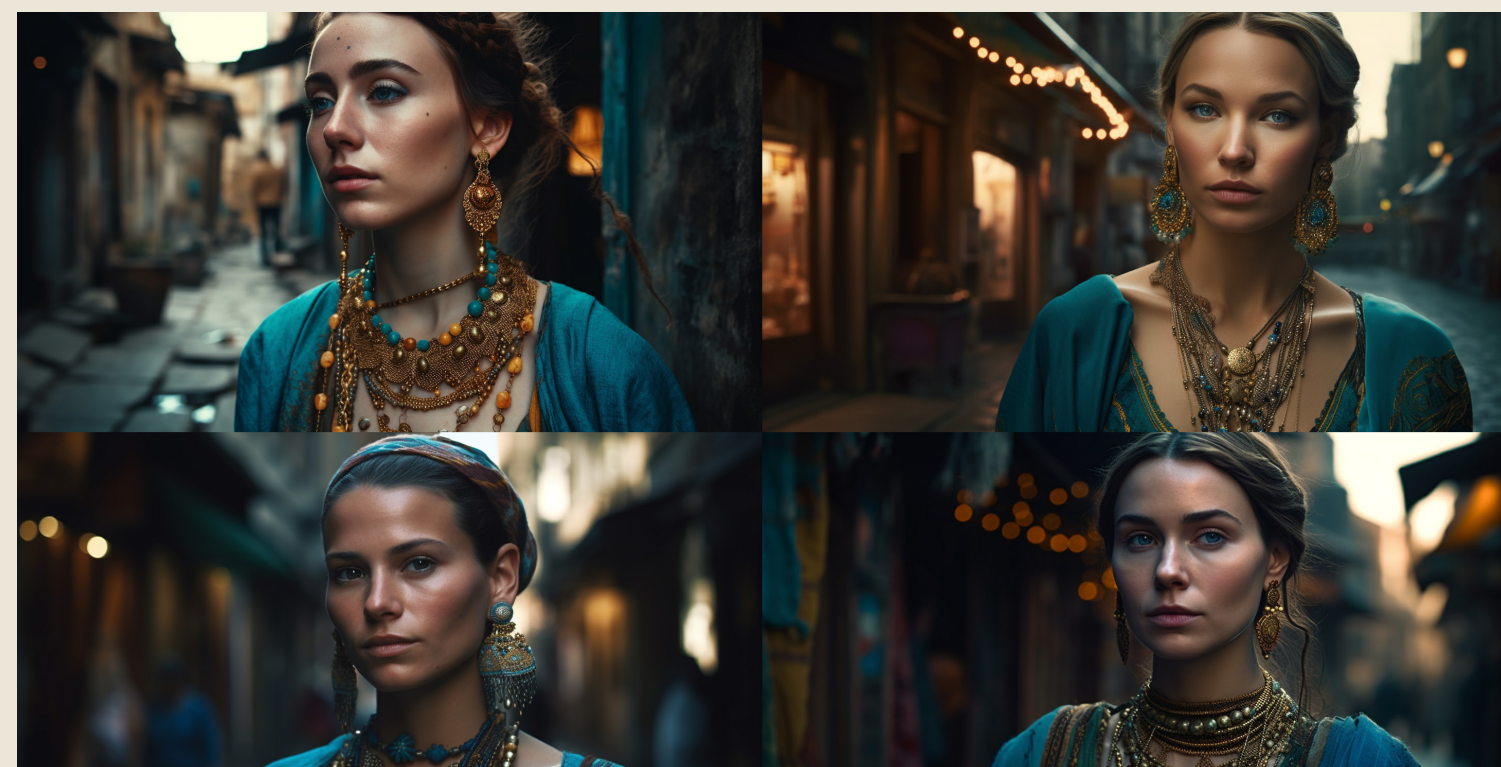
a young woman in a dress in medieval or renaissance costume stands on the street, (SUBJECT)

in the style of dark gold and dark aquamarine, intense close-ups, orientalist imagery, (STYLE)

strong facial expression, (ACTING)

soviet, photo taken with provia, (CAMERA)

queencore



woman in jewelry standing down in an alleyway, (SUBJECT)

in the style of classical, historical genre scenes, turquoise and amber, (STYLE)

exaggerated facial features, intricate costumes, (ACTING)

national geographic photo, close-up, 8k resolution (CAMERA)

TOKENS

WHAT ARE THEY?

When you issue a Prompt, the Midjourney Bot will scan it and break it down into individual words and phrases to serve as the building blocks for creating the image. These are Tokens.

BEES!

You can think of it like Midjourney Releasing a swarm of bees on your prompt, collecting pollen. The Token Bees collect words and phrases from your prompt to assemble your image.

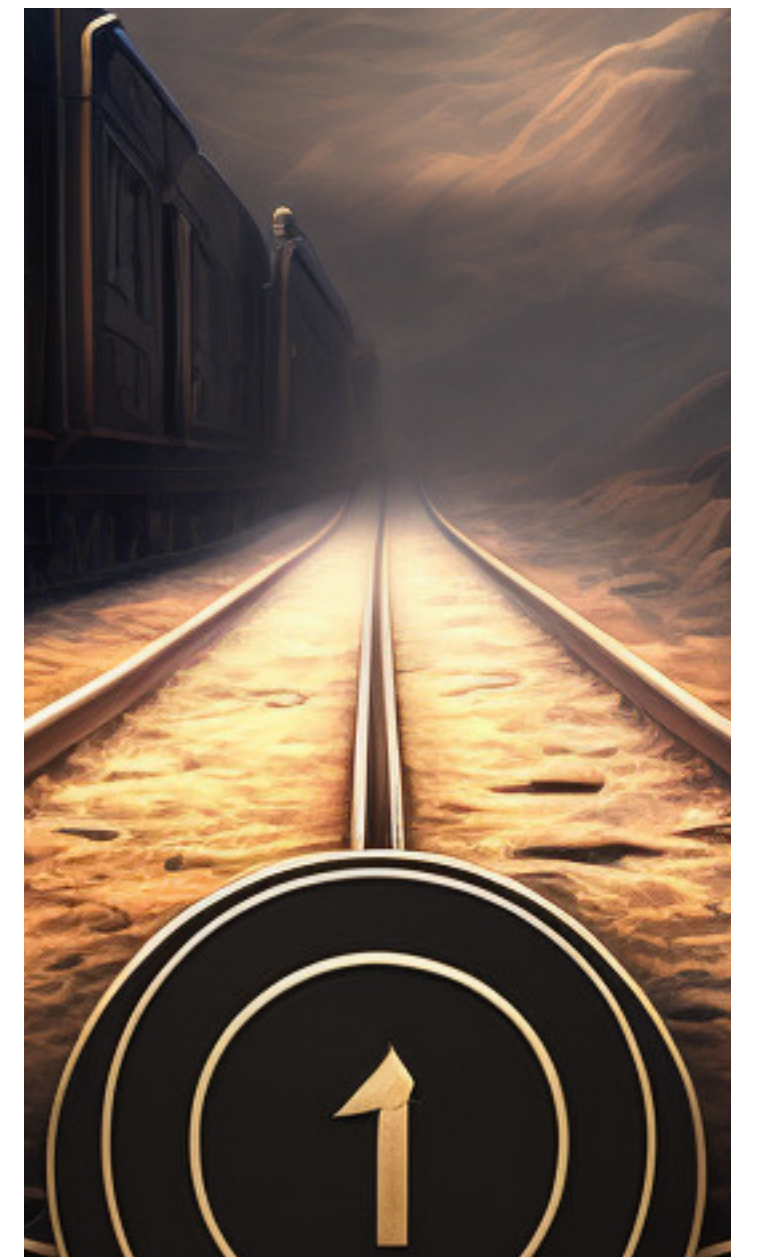
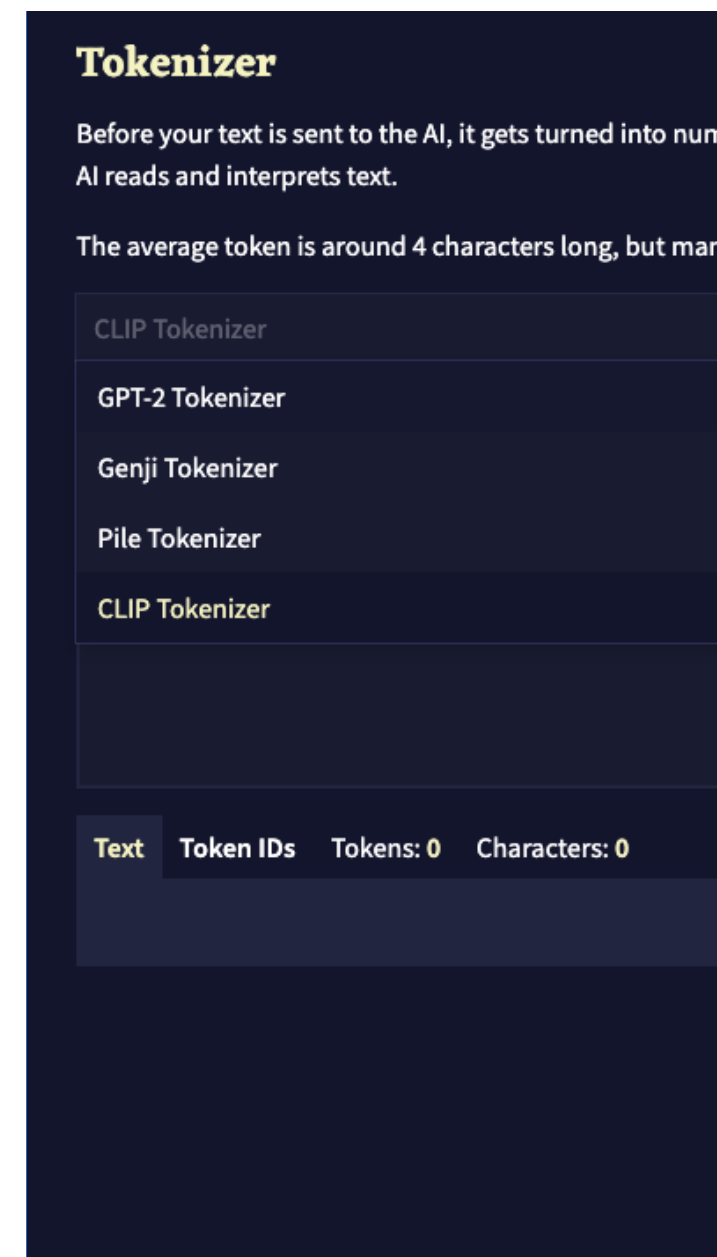
BUT!

Each /imagine job can only hold 72 tokens, and can only use so much "pollen" per bee. Large Prompts with lots of tokens end up weakening the overall power of each token!

COUNT YOUR TOKENS!

To Analyze the amount of Tokens in your prompt, you can use the site: <https://novelai.net/tokenizer>

Before you run your prompt, make sure that you change the dropdown to CLIP Tokenizer, and then click on the tab that reads Token IDs.





THANK
YOU!

YOUTUBE.COM/@THEORETICALLYMEDIA

TWITTER: @THEOMEDIAAI

THEORETICALLYMEDIA@GMAIL.COM